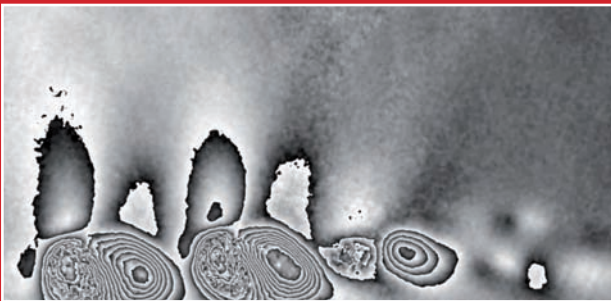


NEW: Intact[®] 2800

Shearography Inspection System for OTR Tires



For many years, the Intact system series by Steinbichler Optotechnik is setting standards for innovative and highly precise technology in non-destructive tire testing. With the revolutionary system concept „Intact 2800“ we are now proud to launch a powerful and efficient solution for the inspection of OTR tires.

- easy tire handling with forklift
- no tire flipping necessary for inspection of second sidewall
- no stress points on tread and sidewall due to tire flipping
- no stress points in shoulder area caused by tire weight
- no dirt and tire wear caused by test procedure
- heavy-duty vacuum chamber:
pressure difference of up to 200 mbar
(= 20 % of atmospheric pressure)
> maximum fault sensitivity!

Cycle time: max. 15 minutes

Tire sizes: outer diameter 1300 - 2800 mm
width 400 - 1200 mm
max. weight 3000 kg